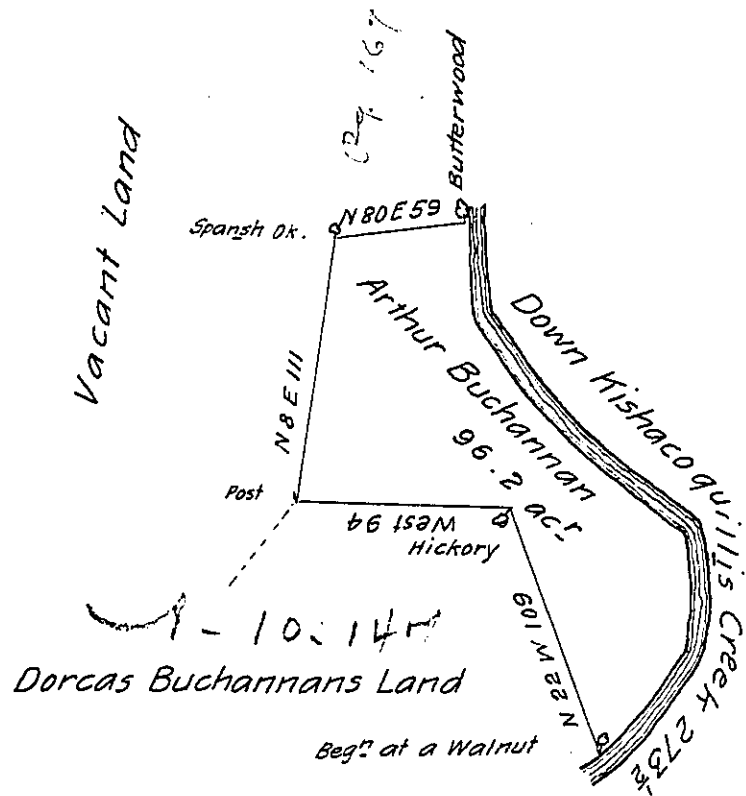


The Courses down  
the Creek is —

5 6 E 40  
5 47 E 126  
South 49½  
5 38 W 58  

---

In all 273½



The draught of a tract of land Called — Situate in Kishacoquillis  
Valley bounded on the East by Kishacoquillis Creek in Cumberland County con-  
taining ninety six acres and forty two perches with the usual allowance of six ac<sup>rs</sup>  
P. Cent for roads &c<sup>o</sup>. Surveyed the 25<sup>th</sup> day of May Anno Dom 1768. In pursu-  
ance of an Order of Survey to Arthur Buchannan bearing date at Philad<sup>a</sup>  
the 4<sup>th</sup> day of December Anno. Dom 1767 and numbered 4635 \*

P. Wm Maclay D.S.

To John Lukens Esq<sup>r</sup> Surv<sup>r</sup> Gen<sup>r</sup> }  
of the Province of Pennsylvania }

\* Say 4634

IN TESTIMONY that the above is a copy of the original remaining on file in  
the Department of Internal Affairs of Pennsylvania, made  
conformably to an Act of Assembly approved the 16th day of  
February, 1833, I have hereunto set my Hand and caused  
the Seal of said Department to be affixed at Harrisburg,  
this ..... ..... day of October 1904

*Joseph P. Brown*  
Secretary of Internal Affairs.